

Mortice Lock Options

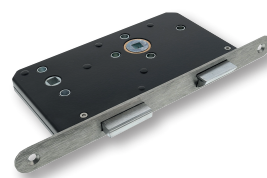
HARDWARE OPTIONS

TECHNICAL SPECIFICATIONS



Briton 5540 Latch Radius

Designed for doors with lever furniture that do not need to be locked.



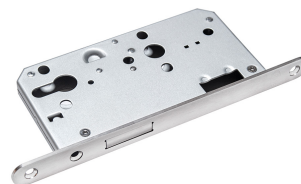
Briton 5430 Bathroom Lock

Used for privacy by occupant to lock bathroom door with a deadbolt operated by thumbturn on the inside, and an indicator/emergency release on the outside. Latch normally operated by lever handles. This bathroom lock is compatible with an electric strike making it great for public toilets with paid access.



Briton 5750 Radius Cylinder Nightlatch w/o Holdback

Nightlatches are used to automatically latch the door shut. Lever handles on one or both sides are used to withdraw the latch. They are often used with electric strikes to provide access control on one side and lever exit from the other. The cylinder can also retract the latch. It enables exit from a building using only the lever door handle, without compromising security.



Briton 5410 Cylinder Deadlock Radius

The Briton 5410 is durable and secure deadlock that is a reliable option for commercial deadlocking requirements

Key features: Drill resistant heavy duty hardened deadbolt with 22mm throw on a double turn of the cylinder, radiused forends, 60mm backset and 72mm centre.



Briton 5760 Escape Sashlock Radius

Key features: Lever handle both sides. For use by trained staff only (not general public). Each side works independently. Deadlocks at night. Has to be CE marked for external fire exits.

Escape lock with split follower - Latchbolt withdrawn by lever handle from both sides. Split follower function enables both the deadbolt and latchbolt to be withdrawn simultaneously by inside lever handle. Easily reversible escape mechanism.

- EN 12209 and CE Marked
- EN 1634 fire testing for 4 hour steel fire doors

PLEASE NOTE:

For EN 179 compliance, the lock must be fitted with compatible lever furniture (See CE certification for further details).

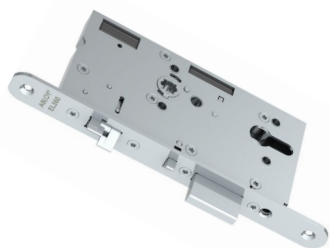


Briton 5420 Sashlock Radius

Our most popular and reliable lockcase for both it's security and longevity.

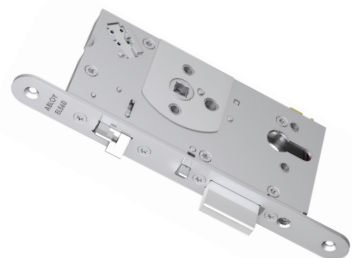
Cylinder latch function enables the cylinder to withdraw the deadbolt on the first turn and the latch on the second turn of the cylinder.

Key features: Drill resistant heavy duty hardened deadbolt with 22mm throw on a double turn of the cylinder, radiused forends, 60mm backset and 72mm centre.



ASSA ABLOY EL560

- Escape Sash lock function – always openable from the inside.
- Lever both sides - Suitable for EN179 means of escape – Trained personnel only.
- Auto deadlocking.
- Access control from the outside via lever handle.
- Lever retracts the deadlock and latch.
- Certified for use on uninsulated fire-rated doors.
- Two point locking due to double action latch and deadlock.
- Requires concealed door loop.
- 65mm backset.



ASSA ABLOY EL561

- Auto deadlocking sash lock.
- Use with lever both sides - personnel only.
- Lever retracts the deadlock and latch.
- Access control from both directions via control system and lever handle.
- Certified for use on uninsulated fire-rated doors.
- Two point locking due to double action latch and deadlock.
- Requires concealed door loop.
- 65mm backset.



ASSA ABLOY EL532

- Auto deadlocking sash lock.
- Motorised deadlock retraction.
- Can be operated as push pull due to motorised retraction.
- Mechanical override via cylinder.
- Certified for use on uninsulated fire-rated doors.
- Two point locking due to double action latch and deadlock.
- Requires concealed door loop.
- 65mm backset.