



D UTSCHTEC
Automatiktüren aus Deutschland



Hermetically Sealed Sliding Doors

Hygenix.ie
Automatic Hygiene Doors

Environments such as hospitals, health clinics and medical centers require close attention to every detail as these places play a key role in an absolutely significant aspect of our lives; our health. For this reason, we at Deuschtec have made sure that a wide variety of sleek yet highly efficient solutions are available to satisfy all needs. These doors are designed and made complying with the highest and most recent standards and legislations on hygiene and contamination control. Our hygiene products are shining examples of how safety, functionality, stability and durability can come together with exquisiteness.



The hermetically sealing sliding door has been specifically designed for use in areas where hygiene and the control of air leakage is critical. The door has a unique patented track system which enables it to seal perfectly when closed helping to reduce air handling costs, cross contamination and wound infections. The system operator is designed for normal service with automatic pedestrian sliding doors and exclusively for a proper sealing in dry rooms.

Control Unit

By drawing on the most advanced German engineering technology together with a fruitful collaboration with German electronic manufacturers, Deuschtec controlling microprocessor circuit boards have been made to respond to all European Union and German necessities such as machinery directive, electromagnetic compatibility (EMC) and low voltage directives. Moreover, its software and electronic design have met all relevant German and European standards such as DIN18650, En16005 and EN ISO 13849. These distinguishing features guarantee the highest levels of security and the most durable system. Furthermore, due to the use of sophisticated technologies to save energy and resources, you can be justly proud of enjoying an eco-friendly technology!



Gear Motor

Like its other state-of-the-art parts, Deuschtec Hermetic .series' motors are fully made in Germany. Their 100 W motors are absolutely indestructible and are there to ensure reliable performance for a lifetime. Great efficiency and enhanced function are achieved through employing years of experience and the latest technologies in the process of our motors' design and production. These brushed DC motors are so quiet that while in action, you will hear nothing but a muffled sound.

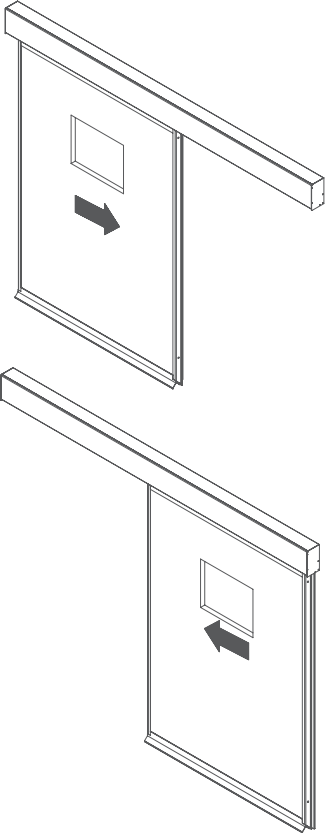
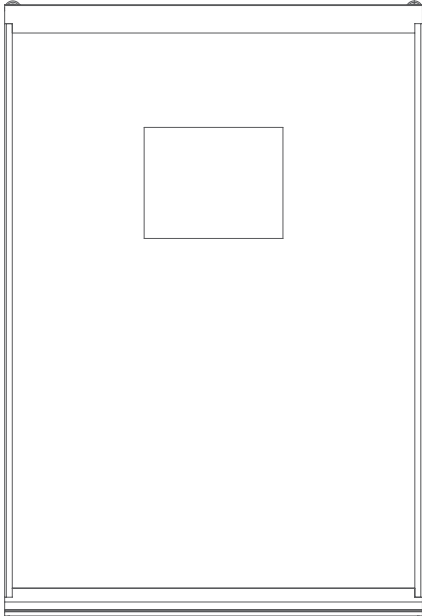
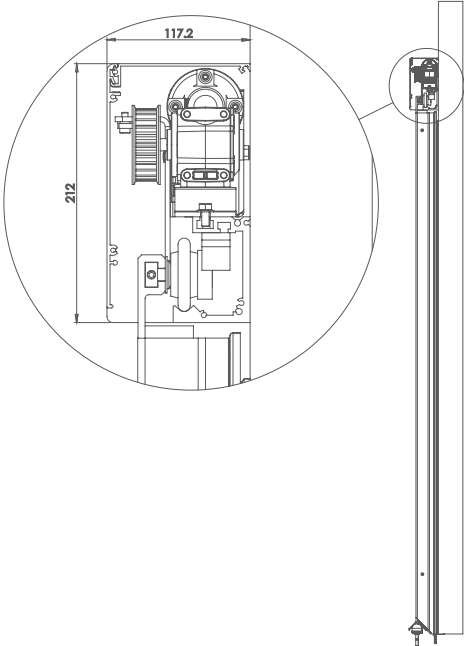
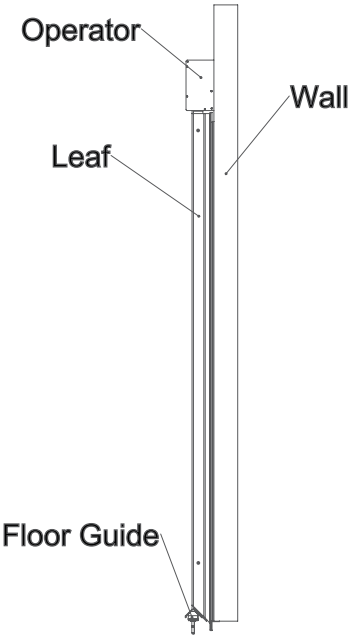


opening width - single panel	800 - 2.000 mm
opening width - double panel	1.000 - 3.000 mm
opening width - Break-out position	2500 - 4500mm
max leaf weight, single	200kg
max leaf weight, double	2 x 150 kg
operator height	155 mm
operator depth	160 mm
opening speed	100 - 550 mm/s
closing speed	100 - 500 mm/s
hold-open time	0 - 30 s
ambient temperature	-15 to +50°C
protection class	IP20
100% german-made operator kit	✓
track profile	anti-crash stainless steel
anti-noise rubber profile	✓
external protected power supply	✓
input power	230V AC±10%, 50/60Hz
gear motor power	100 W
max power consumption	250 W
max operation cycles with 2.2 Ah backup battery (Optional)	400
max operation cycles with 7.2 Ah backup battery (Optional)	1.000
possibility to adjust force limitation according to DIN18650 and EN16005	✓
possibility to use safety sensors with testing signal	✓
possibility to adjust force limitation according to DIN18650 & EN 16005	✓

mechanical key switch	✓
24V DC output for external accessories	✓
power lock	✓
possibility of using electro- mechanical lock (optional)	✓
lock monitoring	✓
possibility of using highly secure electromechanical multi-point lock (HSML)	✓
possibility of using digital programme switch (optional)	✓
read-out error memory with error codes (with digital programme switch)	✓
programmable output (optional)	✓
programmable input (optional)	✓
possibility of using more software & hardware options by using DEAP device (optional)	✓

Standards:

compliant with german standard DIN 18650	✓
compliant with EU standard EN 16005	✓
compliant with EU standard EN 60335	✓
compliant with EU standard EN ISO 13849-1:2008	✓
compliant with EU low-voltage directives	✓
compliant with EU EMC directives	✓
manufactured according to ISO 9001:2000	✓
TÜV approved	✓
CE conformity	✓
tested for 1.000.000 cycles	✓



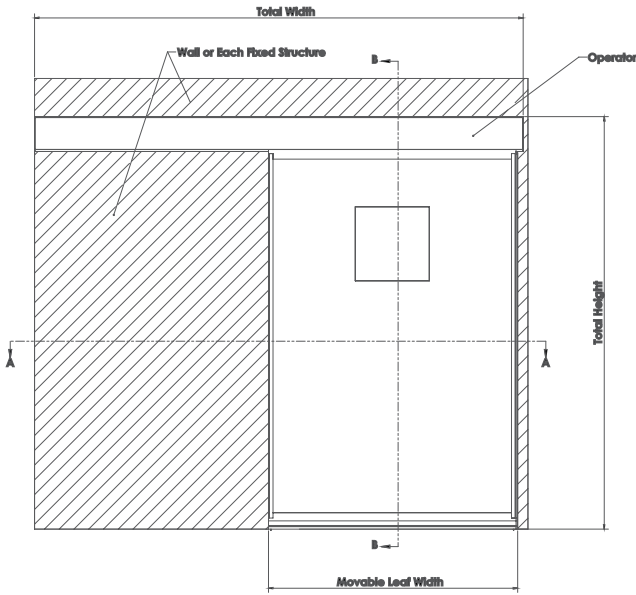
Hermetic Sliding Door

Hangers	Hard plastic roller
Front cover	Extruded aluminum profile
Floor guides	Reinforced plastic guides
Fail -safe security	Two fail -proof devices on the door panel prevent the door from jumping during the course.
Handle	The handle of the outer and inner are made from stainless steel lever (optional)
HPL Panel	Panels coated circumferential ly in corners by Aluminum profiles for any wall thickness
Aluminum surround frame	Aluminum frame which installs all over the panel
Aluminum sealing frame	Aluminum frame, material Al 6063, to seal on the operating side of the door

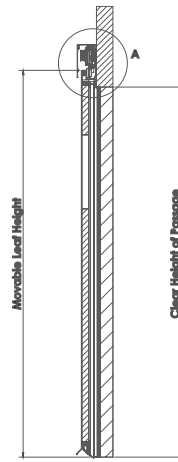
Optional Equipment

Window	Integrated windows recessed in the door leaves, Several designs for radiological protection, laser protection, acoustic insulation; Upon request also with aluminum frame and/or integrated blind
Access	Elbow or foot activation button to operate from inside and outside
Automatic unit	Processor controlled for a wide variety of options
Lock	Electro-mechanical lock (optional)
Installation requirements	<p>Walls: A concrete or reinforced crossbeam or a steel beam is required for rail installation</p> <p>Floor: To achieve the hermetic function and to prevent the rubber from slipping out of the sliding area, the rubber should be mounted on the frame so that it has effective and sufficient contact with the wall when the door is in closed position. The floor covering must already be finished before the door assembly begins in order to seal the door to the floor.</p>

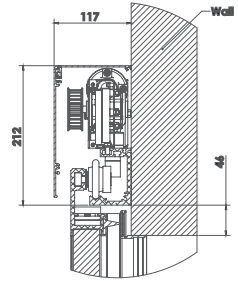




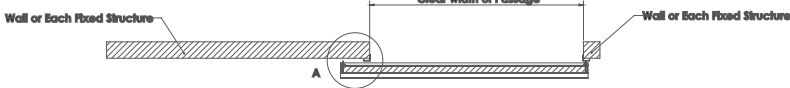
SCALE 1 : 8



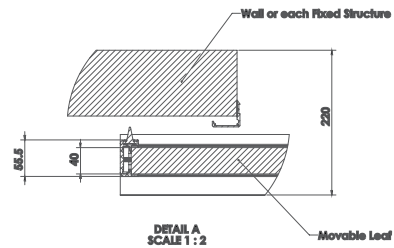
SECTION B-B
SCALE 1 : 8



DETAIL A
SCALE 1 : 2

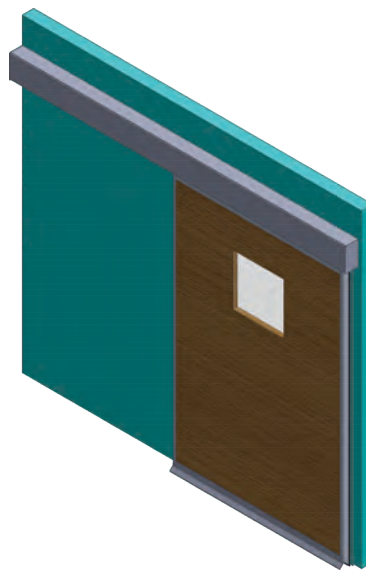
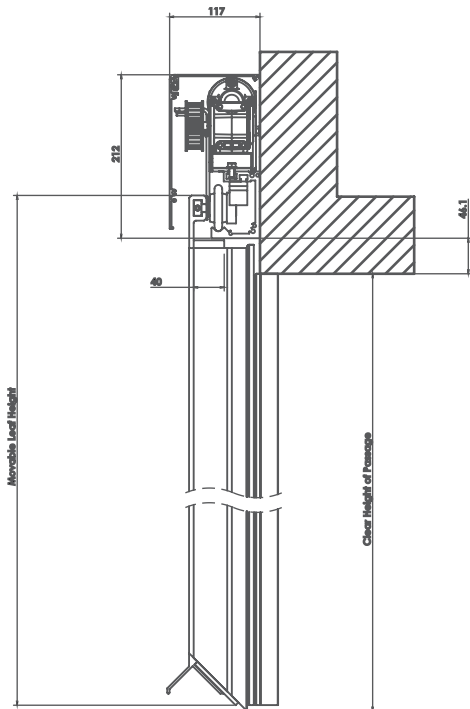


SECTION A-A
SCALE 1 : 8



DETAIL A
SCALE 1 : 2

Surface Data
DIN ISO 1302
 Workpiece Edges
ISO 13715
 General Tolerances
DIN EN 2768-M
 Angle Tolerances
 $\pm 0.5^\circ$



Surface Data
DIN ISO 1302
 Workpiece Edges
ISO 13715
 General Tolerances
DIN EN 2768-M
 Angle Tolerances
 $\pm 0.5^\circ$



Hygenix Ltd

CLEANROOM ACCESSORIES

help@hygenix.ie

www.hygenix.ie